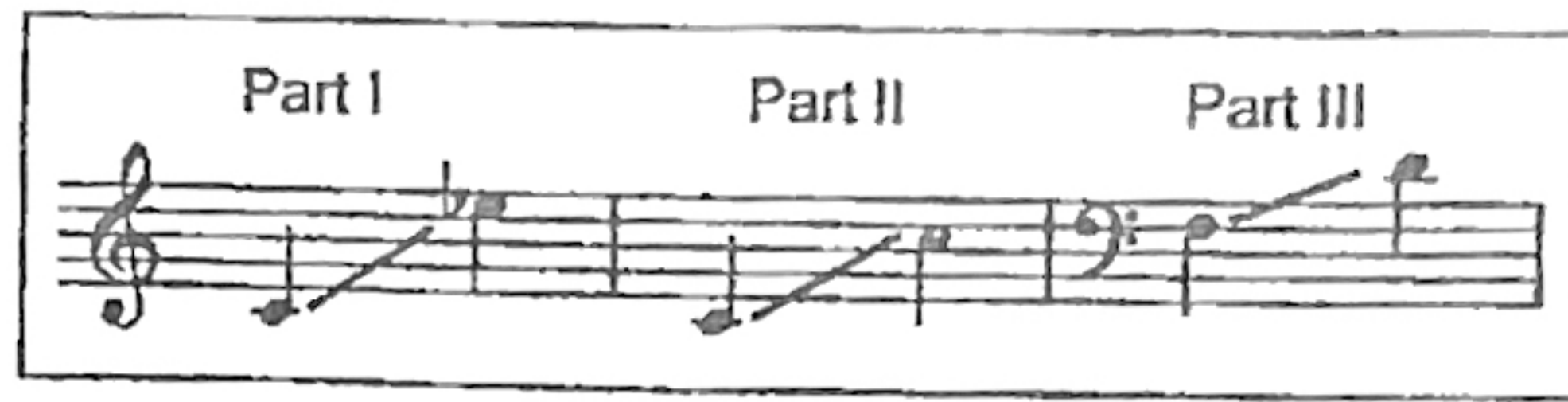


Et In Terra Pax

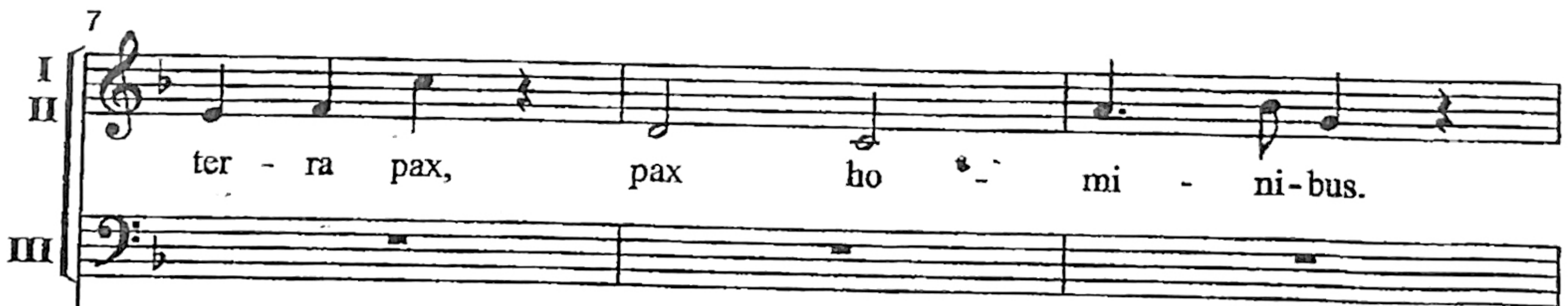
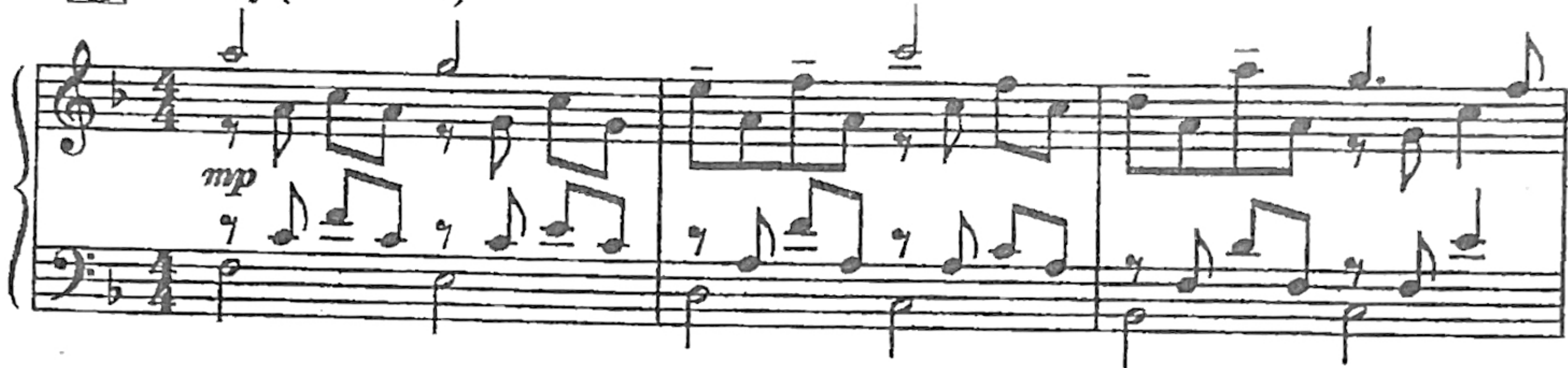
Three-part Mixed and Piano*

Traditional Latin

Music by
Victor C. Johnson



① Gently (♩ = ca. 80)



Performance time: ca. 2:35

*Also available: SATB (CGE199); SSA (CGE200); Two-part (CGE202);
Performance/Accompaniment CD (CGECD86).

Copyright © 2017 Choristers Guild. All rights reserved. Printed in U.S.A.

Reproduction of all or any portion in any form is prohibited without permission of the publisher.

The copying of this music is prohibited by law and is not covered by CCLI, LicenSing, or OneLicense.net.

10

I Et in ter - ra pax, pax ho - mi - ni -

II

III

13

I bus.

II

III

2

16

I Et in ter - ra pax,

II Et in ter - ra pax,

III Et in ter - ra pax,

poco rit. *a tempo* *mf*

poco rit. *a tempo* *mf*

poco rit. *a tempo* *mf*

19

I
II

pax ho - mi - ni - bus. Et in

III

pax ho - mi - ni - bus. Et in

22

I
II

ter - ra pax, pax ho - mi - ni - bus. *mp* *accel.*

III

ter - ra pax, pax ho - mi - ni - bus. *mp* *accel.*

25

I
II

Con moto *mf* Pax ho - mi - ni - bus, pax ho - mi - ni - bus,

III

Con moto Pax ho - mi - ni - bus, pax ho - mi - ni -

27

I
II

pax ho - mi - ni - bus bo - nae vo - lun - ta - tis.

III

bus, pax, bo - nae vo - lun - ta - tis.

29

I
II

cresc.
Pax, *cresc.* pax ho - mi - ni - bus

III

Pax ho - mi - ni - bus, pax ho - mi - ni - bus

31

I *f* II *mf*

Soprano
Alto
Tenore
erBasso

bo - nae vo - lun - ta - tis, bo - nae vo - lun - ta - tis,

III

bo - nae vo - lun - ta - tis,

33 I, II *mp cresc. e poco rit.* 4

div. f

bo - nae, bo - nae vo - lun - ta - tis.

mp cresc. e poco rit. f

bo - nae, bo - nae vo - lun - ta - tis.

36 *rit.* **Tempo I** *mf* 9

Et in ter - ra pax,

rit. mf

Tempo I Et in

dim. e rit. mf

39

pax ho - mi - ni - bus. Et in

ter - ra pax ho - mi - ni - bus. Et in



42

I
II

ter - ra pax, pax ho - mi - ni - bus.

III

ter - ra pax, pax ho - mi - ni - bus.

45

I
II

mp Et in ter - ra pax, pax ho - *rit. e dim. al fine*

III

mp Et in ter - ra pax, pax ho - *rit. e dim. al fine*

48

I
II

mi - ni - bus.

III

mi - ni - bus.